

*How to Read Music for Guitar*  
*Beginner's Music Reading*  
*Cheat Sheet*

*Excerpt from*

**Guitar in**  
**Real Time**

**Level One**

**John Chamley**

Music tracks and other resources available at  
[www.guitarinrealtime.com](http://www.guitarinrealtime.com)

Recommended accompanying publication:  
**Guitar Practice Planner**  
**(John Chamley)**

Guitar in Real Time  
Edition 2 2017

# Music Notes in Standard Notation

## How Guitar Notes are Written

Guitar notes are written on a staff, (or stave), with five lines and a treble-clef (or G-clef) on the left. On the right shows the open string notes of a guitar written on the staff. Notice that the notes can be either on lines or in spaces. Each line or space represents a different note.

	1	2	3	4	5	6	String number
Note name	E	B	G	D	A	E	

TREBLE CLEF

## Counting Time

Notes are grouped together in bars, or measures. Measures are divided by bar lines.

The time signature determines how many notes are in each measure. The most common time signature is "four-four" shown here on the right. This means that each bar will equal four quarter notes.

TIME SIGNATURE

BAR LINE

Count 1 2 3 4 1 2 3 4

Counting time you would count, "one, two, three, four" for each measure.

## Other Note Types

The previous notes are all quarter notes. Here are some other note types and rests found in Level 1. When you count time, each note type has a different duration.

Whole note	Half notes	Dotted half note	Eighth note
------------	------------	------------------	-------------

Count 1 2 3 4 1 2 3 4 1 2 3 4 and

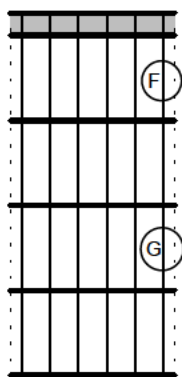
Whole note rest	Half note rest	Quarter note rests	Dotted half note rest	Eighth note rests
-----------------	----------------	--------------------	-----------------------	-------------------

# 1st Position "Natural" Notes

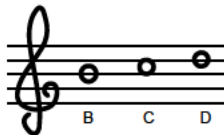
STRING 1



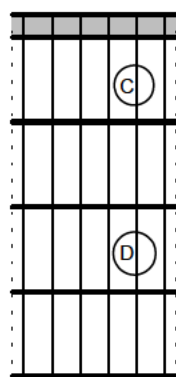
1  
E



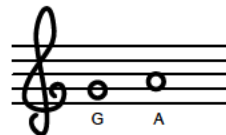
STRING 2



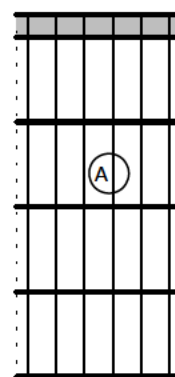
2  
B



STRING 3



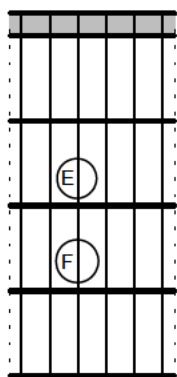
3  
G



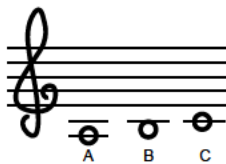
STRING 4



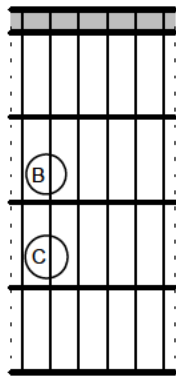
4  
D



STRING 5



5  
A



STRING 6



6  
E

